

PROFINETSwitch IP Core

PROFINET RT CC-B Line Structure support in FPGA

General description

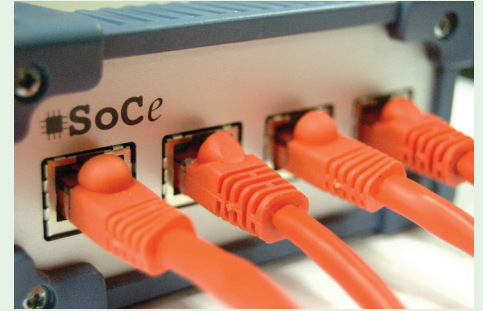
The **SoCe** **PROFINETSwitch** IP core is an Intellectual Property (IP) Core for FPGAs. It co-works with a PROFINET software stack running on an external or an internal CPU (Microblaze or ARM).

The reference design implements PROFINET RT CC-B Line Structure integrating PORT.DE Profinet Software Stack.

This switch allows wire-speed communication among all the ports. The switch buffers and verifies each frame before forwarding it.

It offers direct packet forwarding to certain port from the CPU port or it allows to be the autolearning MAC address table who decides the destination port of frames.

PROFINETSwitch is an ideal solution for implementing flexible Profinet Automation equipments. It supports 10/100 Mbps Ethernet interfaces.



PROFINETSwitch can be used in combination with **SoCe** **HSR-PRP Switch** IP to introduce HSR and PRP capabilities in the ports that were required.

PROFINETSwitch IP key features

- *High Performance*: Hardware switching among ports implemented to allow maximum throughput.
- *Efficient*: Optimized to require few logic resources in order to allow the implementation on low-cost FPGA devices.
- *Port-based tagging support*: Identification of the received External CPU can know the source port of received frames.
- *CPU configurable*: MDIO slave interface to allow attached CPU to configure IP core and to access statistics.
- *Flexible*: Fully scalable and configurable
 - Buffers queue length.
 - Configuration and statistic registers.
- Address table with up to 1024 entries.
- Possible to work with different data rate (10/100 Mbps) for each port.
- *Extensible*: Zynq version available.

Applications

PROFINETSwitch may be used in a wide range of products and applications.



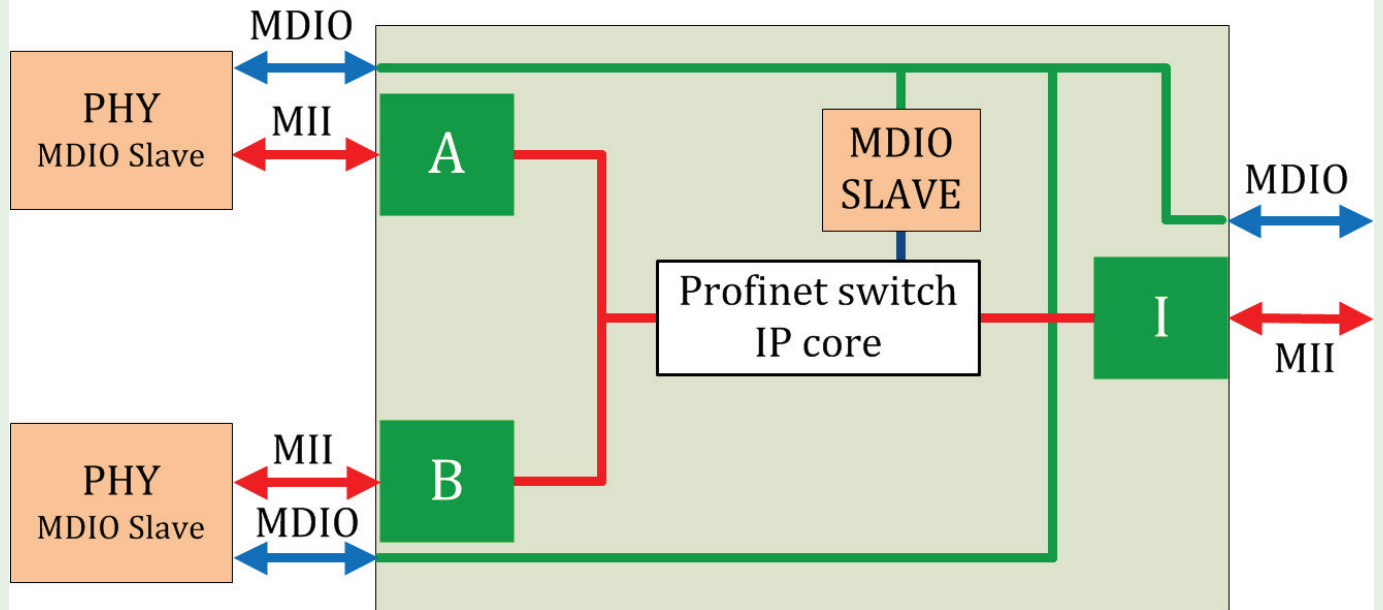
- Industrial Networking
- Transportation



- Robotics
- Security
- Defense and Aerospace



Block Diagram



Reference and Evaluation Designs

Features implemented on the Reference Designs:

- 2 external port + 1 internal port switch
- Store capacity of up to 1024 MAC addresses
- MDIO slave interface

Reference Designs and Evaluation boards:

- **NETbox** : Contact **SoCe**
- **SMARTbox** : Contact **SoCe**
- **SMARTZynq** : Contact **SoCe**
- ZEDBOARD: Contact **SoCe**

Ordering information and contact

SoCe offers for **PROFINETSwitch** IP core the following licensing modes:

- 'One-shoot' encrypted VHDL source code - Site license
- 'One-shoot' netlist - Project License

SoCe:

soceindustrial@soc-e.com

System-on-Chip engineering

48013 Bilbao SPAIN

Tlf: +34 944420700

